



# **UNIVERSITY OF JAMMU**

## **COLLEGES DEVELOPMENT COUNCIL**

**www.jammuuniversity.in**

**B.Ed. Admission Non-Govt. Colleges of Education**

### **SEPARATE SESSION (2): 2011-2012**

**Candidates who have/will obtain B.Ed. Degree from the University of Jammu are eligible for Employment in Central Govt. and other states as communicated by the NCTE (A statutory body of the Govt. of India) vide its circular No. 49/21/2005/NCTE(N&S) Dated May 31, 2007**

#### ***COUNSELLING***

#### ***SCHEDULE***

#### ***OF B.ED.***

#### ***ADMISSION***

***SESSION (2)  
2011-2012  
(SEPARATE SESSION)***

#### **COUNSELLING SCHEDULE**

<b><u>Date &amp; Day</u></b>	<b><u>%age in Graduation</u></b>
10.01.2012 (Tuesday)	70% & above
11.01.2012 (Wednesday)	67% to 69.99%
12.01.2012 (Thursday)	64% to 66.99%
14.01.2012 (Saturday)	62% to 63.99%
15.01.2012 (Sunday)	60% to 61.99%
16.01.2012 (Monday)	58% to 59.99%
17.01.2012 (Tuesday)	56% to 57.99%
18.01.2012 (Wednesday)	54% to 55.99%
19.01.2012 (Thursday)	52% to 53.99%
20.01.2012 (Friday)	50% to 51.99%
21.01.2012 (Saturday)	48% to 49.99%
22.01.2012 (Sunday)	46% to 47.99%
23.01.2012 (Monday)	44.50% to 45.99%
24.01.2012 (Tuesday)	42.00% to 44.49% (for categories)
25.01.2012 (Wednesday)	39.50% to 41.99% (for categories)

**APPLICATIONS FOR REFUND OF FEE SHALL BE ENTERTAINED UPTO ONE DAY PRIOR TO THE LAST DATE OF ADMISSION.**

**CLASS WORK SHALL START W.E.F. 1.02.2012**

The University of Jammu established in 1969 has emerged as one of the leading Universities of India and has recently been recredited as 'A' grade by NAAC.

The University during the last 4 decades has shown accelerated growth in infrastructure and academics. With just 11 departments and 10 number of affiliated colleges in 1969, it has presently 35 leading departments and 172 affiliated colleges. University has its main campus in Jammu, besides it has established offsite campuses at Bhaderwah, Kathua, Udhampur, Ramban, Reasi, Poonch, Doda & Kishtwar and with sole motto of providing higher education at the door steps in view of mountainous terrain of Jammu province.

Out of 172 colleges affiliated to the University there are 75 colleges of Education, one college is the Government College of education while other 74 are the non- Government Colleges of Education.

Of late, Jammu has emerged as a hub of teacher education in northern India since its colleges are catering to the needs of not only northern Indian states but to even far off states like Bihar, Jharkhand, MP, Maharashtra & Gujarat. The district wise Distribution of the Colleges of Education is as under:-

#### **ZONE WISE DISTRIBUTION OF COLLEGES OF EDUCATION**

<b><u>ZONE</u></b>	<b><u>DISTRICT</u></b>	<b><u>NAME OF THE COLLEGE</u></b>	<b><u>YEAR OF ESTAB</u></b>
1.	KATHUA	1. Vivekananda College of Education, LakhanpurKathua.	1995
		2. Ashoka College of Education, National , Kathua	2001
		3. Guru Gang Dev Ji College of Educ. Chann Arrorian, Hiranagar, Kathua	2001
		4. New Age College of Education, Phinter (Billawar) Distt. Kathua	2002
		5. Ramisht College of Education, Basohli, (Kathua)	2003
		6. Baba Farid College of Education, Hatli Morh, Kathua	2003
		7. Thakur Dharma Singh College of Education, Kathua	2003
		8. Rajiv Gandhi Memorial College of Education, Kathua	2003
		9. Surya College of Education, Kathua	2003
		10. Bhagat Kabir College of Edu. Hatli Road.	2004
		11. Cosmic College of Education, Lakhanpur, Kathua	2004
		12. Lal Bhadur Shastri College of Education-	2007
		13. Bharat College of Education, Kathua	2007
		14. R.S. College of Education, Kathua	2007
		15. Satyam College of Education, Kathua	2007
		16. Guru Teg Bhadur College of Education.	2008
		17. Shri Shri Paramhansa Yogananda College of Education	2008

<b><u>ZONE</u></b>	<b><u>DISTRICT</u></b>	<b><u>NAME OF THE COLLEGE</u></b>	<b><u>YEAR OF ESTAB</u></b>
2.	SAMBA 1.	Dogra College of Educ., Basi Kalan, Bari Brahmana Jammu	1994
	2.	Chenab College of Education, Langer, Opp. S.B.I. Kaluchak, Jammu-	1999
	3.	Adarsh College of Education, Tarore Bridge, N H, The. Samba, Jammu	2000
	4.	Bhargava College of Education, Samba	2001
	5.	CMH College of Education, Chowdhi Top, Sainik Colony, Jammu-	2001
	6.	R.K. College of Education, Bari Brahmana Jammu	2001
	7.	Vimal Muni College of Edu., Ramgarh, Jammu	2003
	8.	Saraswati College of Education, Najwal, Jammu-Pathankot NH, Jammu	2003
	9.	KC Minerva College of Education	2004

<b><u>ZONE</u></b>	<b><u>DISTRICT</u></b>	<b><u>NAME OF THE COLLEGE</u></b>	<b><u>YEAR OF ESTAB</u></b>
3	JAMMU 1	MIER College of Education, B.C. Road, Jammu	1981
	2.	M.C. Khalsa College of Education, Chand Nagar, Below Gumat, Jammu	1989
	3.	NSM College of Education, Anand Nagar, Bohri, Jammu	1994
	4.	Divya College of Education, Lower Gaddi Garh, Miran Sahib, Jammu	1998
	5.	Luthra College of Education, Bohri, Talab Tillo, Jammu	2000
	6.	K.C.S. College of Education for Women, Upper Paloura, Jammu	2000
	7.	Trikuta College of Education, Nardni Raipur (Kot-Bhalwal Road) Jammu	2000
	8.	New Millennium National College of Education, Tarore, Jammu	2000
	9.	Sher-e-Kashmir College of Education, Ajit Nagar, Near Airport, Jammu	2001
	10.	National College of Education, Purkhoo Camp, Domana,	2001
	11.	Calliope College of Education, Jammu-Akhnoor Highway, Dommi, Jammu.	2001
	12.	New Gandhi Memorial College of Education, Miran Sahib, Jammu	2001
	13.	Atman College of Education, Greater Kailash, Kunwani Bye-Pass ,Jammu	2001
	14.	Harvard College of Edu. Gadi Garh, Airport Road Jammu.	2001
	15.	KC College of Education, Akhnoor Road, Jammu	2001
	16.	Guru Nanak College of Education, Jallo Chack Kunjwani, Jammu	2001
	17.	B.N. College of Education, Nawabad-Sunjwan, Jammu	2002
	18.	Sai Shyam College of Education, Ghou-Manhasan Jammu,	2002
	19.	Shirdee College of Edu,Mohamood Pur,Bishnah,jammu	2003
	20.	Ranjit College of Education,Guru Arjun Dev Nagar,Kunjwani, jammu	2003
	21.	Tagore College of Education,Akalpur,P.O. Talab Tillo, Jammu	2003
	22.	Kawa College of Education,Patoli Gurha Brahmana, jammu	2003
	23.	Hill People College of Education,Kot-Bhalwal, Jammu	2003
	24.	Sacred Heart College of Education, Jammu	2003

25.	J.K. College of Education, Kunjwani, Jammu	2003
26.	Sant Mela Singh College of Edu. Digiana, Jammu	2003
27.	K.C. Gurukul College of Education,	2003
28.	Jan College of Education, Kot-Bhalwal, Jammu	2004
29.	Handa College of Edu.Sainik Colony, Jammu	2004
30.	Taawish College of Education, Narwal, Jammu	2004
31.	Galaxy College of Education, Sainik Colony, Jammu	2004
32.	Beacon College of Education, Kot-Bhalwal.	2004
33.	New Modern College of Education, Sainik colony	2004
34.	Thakur Anant Singh College of Education, Sainik colony	2007
35.	R.M. College of Education, Jammu	2007

<u>ZONE</u>	<u>DISTRICT</u>	<u>NAME OF THE COLLEGE</u>	<u>YEAR OF ESTAB</u>
4	UDHAMPUR	1. Shivalik College of Education, Shiv Nagar, NH-1A, Udhampur	1998
	&	2. Kalras College of Education, Hospital Road, Udhampur-	2000
	REASI	3. Kalra College of Education, Poonch House, Kud	2003
		4. Bhartiya College of Education, Udhampur	2003
		5. Bhim Singh College of Education, Udhampur	2009
		6. Vaishno Devi College of Education, Reasi	2002
		7 Shastri Memorial College of Education, Reasi	2003
		8 Durga College of Education, Katra	2004

<u>ZONE</u>	<u>DISTRICT</u>	<u>NAME OF THE COLLEGE</u>	<u>YEAR OF ESTAB</u>
5	RAJOURI	1. Tariq College of Education, Ward No.1, Near Salani Bridge, Rajouri	2000
	&	2. Swami Vishwatamanand Saraswati College of Education, Sunderbani, Rajouri-	2001
	POONCH	3. Himalayan College of Education, Rajouri.	2003
		4. Poonch College of Education, Poonch	2003

<u>ZONE</u>	<u>DISTRICT</u>	<u>NAME OF THE COLLEGE</u>	<u>YEAR OF ESTAB</u>
6.	KISHTWAR	1. Islamia Faridia College of Education, Kishtwar	2001
	DODA &		
	RAMBAN		

The number of College of Education in Non-Government Sector has grown during the last 3 decades as depicted by the data given below:-

### STATISTICAL REPRESENTATION OF COLLEGES OF EDUCATION IN JAMMU PROVIENCE.

Year	No of colleges
------	----------------

Year 1981	3
-----------	---

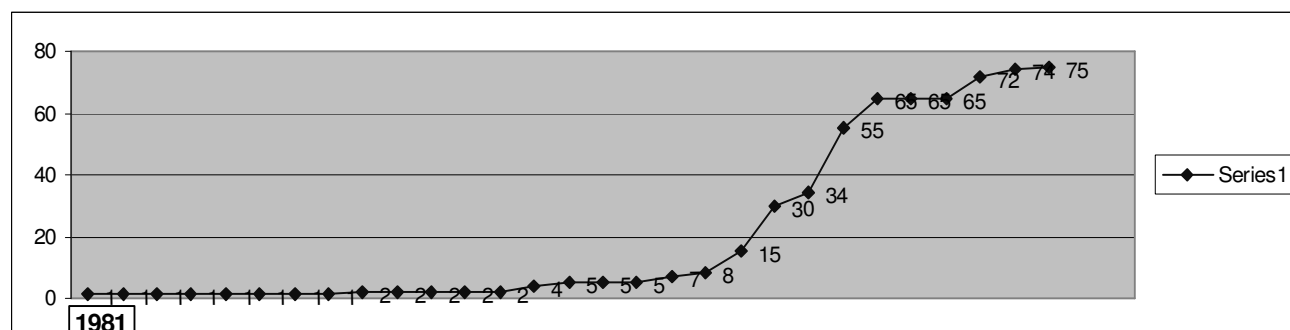
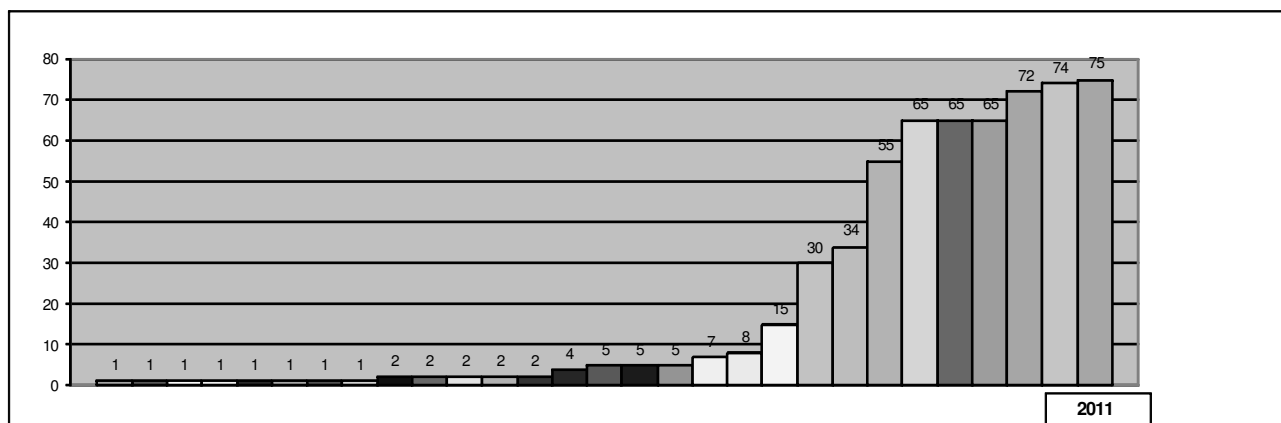
Year 1991	3
-----------	---

Year 2001	36
-----------	----

Year 2010	75
-----------	----

Bar Chart with the values displayed at each bar

**Graphical Representation of Number of Non- Govt Colleges of Education in Jammu Province.**



**STATISTICAL DATA OF NON-GOVT. COLLEGES OF EDUCATION (YEARWISE)**

<b><u>YEAR</u></b>	<b><u>NO. OF COLLEGES</u></b>	<b><u>YEAR</u></b>	<b><u>NO. OF COLLEGES</u></b>
1981	1	1996	5
1982	1	1997	5
1983	1	1998	7
1984	1	1999	8
1985	1	2000	15
1986	1	2001	30
1987	1	2002	34
1988	1	2003	55
1989	2	2004	65
1990	2	2005	65
1991	2	2006	65
1992	2	2007	72
1993	2	2008	74
1994	4	2009	75
1995	5		

Complete details of Non Govt. Colleges of Education affiliated in the University of Jammu during the session 2011-2012 is as under:—

<b>S.No.</b>	<b>Name of the College/ Address/Tel./Fax./email</b>	<b>Distance from Jammu University</b>	<b>Name of the Chairperson</b>	<b>Teaching subjects offered</b>
1.	MIER College of Education B.C. Road, Jammu. Ph. 0191-2546078 email-akg_mier@rediffmail.com	2 kms	Dr. Arun Gupta	English, Hindi, General Science, Mathematics and Social Studies
2.	M.C. Khalsa College of Education Chand Nagar, below Gumat, Jammu Ph. 0191-2546711, 2576597. Fax-2576597	1½ kms	S. Harbans Singh	General Science, Social Studies, English, Mathematics, Hindi and Punjabi
3.	Dogra College of Education Maluk Bhawan, Bassi Kalan, Bari Brahmana, Jammu Ph. 01923-220893	10 kms	Sh. Gulchain Singh Charak	English, Hindi, Punjabi, Social Studies, General Science and Mathematics.
4.	N.S.M. College of Education Anand Nagar, Patta Bohri, Jammu Ph. 0191-2554601, 2552023 email - parneeshmahajan_nsm@yahoo.co.in	6 kms	Sh. T.R. Mahajan	General Science, Social Studies, English, Mathematics, Hindi and Punjabi
5.	Vivekananda College of Education Lakhanpur, Kathua Ph./Fax - 01922-285111 email-vnc_lakhanpur@yahoo.co.in	85 kms	Sh. Sudershan Gupta	English, Hindi, Punjabi, Social Studies, General Science and Mathematics.
6.	Shivalik College of Education Shiv Nagar, National Highway, Udhampur Ph. 01992-270474, 273575 Fax-270373 email-migulati@rediffmail.com	62 kms	Mr. Mineesh Gulati	English, Hindi, Punjabi, Science, Social Studies and Mathematics
7.	Divya College of Education Lower Gaddi Garh, Miran Sahib, Jammu Ph. 0191-2262956, 2263895	7 kms	Sh. K.K. Shastri	General Science, Social Studies, English, Mathematics and Hindi
8.	Chenab College of Education Langar, Opp. SBI Kaluchak, Jammu Ph. 0191-2480873, 24803913 email-collegechenab@yahoo.co.in	8 kms	Sh. R.S. Chib, VSM	General Science, Social Studies, English, Mathematics, Hindi and Punjabi
9.	Luthra College of Education Bohri, Talab Tillo, Jammu Ph. 0191-2503956, 2506537 Fax-2503956	5 kms	Sh. Rajive Luthra	Hindi, Science, Social Studies, Mathematics English, Punjabi, Urdu.
10.	KCS College of Edu. for Women Opp. Roop Nagar Police Post, Paloura, Jammu Ph. 0191-2592952 Fax - 2592479 email-kcs_women@yahoo.co.in	8 kms	Mrs. Purnima Chaudhri	General Science, Social Studies, English, Mathematics, Hindi and Punjabi
11.	Trikuta College of Education Nardni Raipur, Bantalab Road, Jammu Ph. 0191-2594262, 2597868 Fax - 2594262	15 kms	Dr. Roop Lal Sharma	English, Hindi, Punjabi, Social Studies, Science and Mathematics
12.	Adarsh College of Education Tarore Bridge, N-Highway, Distt. Samba Ph. 01923-242818, 242882 Fax-242816 email-roney_792001@yahoo.co.in	22 kms	Sh. A.K. Kapoor	General Science, Social Studies, English, Mathematics, Hindi and Punjabi.
13.	Tariq College of Education Near Salani Bridge, Rajouri Ph. 01962-264273, 264442 Fax.264273 email-tariqcollea@yahoo.co.in	150 kms	Sh. T.M. Tariq	General Science, Social Studies, English, Mathematics, Hindi, Urdu and Punjabi.
14.	Kalra College of Education Industrial Estate Complex, Phse-II, Udhampur Ph. 01992-270267	65 kms	Sh. Aman Kalra	English, Hindi, Punjabi, Science, Mathematics and Social Studies
15.	New Millennium National College of Edu., Sarore, Jammu Ph. 0191-2460572	15 kms	Sh. Ram Paul	General Science, Social Studies, English, Mathematics, Hindi and Punjabi.
16.	Sher-e-Kashmir College of Edu. Ajit Nagar, Gadi Garh, Near Airport, Jammu Ph./Fax - 0191-2263462	5 kms	Mrs. Narinder Kaur	General Science, Social Studies, English, Mathematics, Hindi and Punjabi
17.	Bhargava College of Education Samba, Ph. 01923-243253, 246169, 246170 email-bhargavacollegeof_education@rediffmail.com	40 kms	Sh. Parkash Sharma	English, Hindi, Punjabi, Science, Mathematics and Social Studies
18.	National College of Education Purkhoo Camp, Domana, Jammu Ph. 0191-2604464, 2604549 Fax-2604537 email-nce_2001@rediffmail.com	13 kms	Sh. Vidhi Singh	General Science, Social Studies, English, Mathematics, Hindi, Urdu and Punjabi

19.	Calliope College of Education Jammu-Akhnoor Highway, Doomi, Jammu Ph. 0191-253820 email-manish-suri@rediffmail.com	20 kms	Er. Manish Suri	General Science, Social Studies, English, Mathematics, Hindi and Punjabi
20.	New Gandhi Memorial College of Edu. Dhinde Kalan, Miran Sahib, Jammu Ph. 01923-263083 Fax. 01923-263083	12 kms	Mr. Sushil Mahajan	English, Hindi, Punjabi, Science, Mathematics and Social Studies
21.	Swami Vishwatamanand Saraswati College of Education, Sunderbani Ph./Fax - 01960-234952	70 kms	Shri Swami Vishwatamanand Saraswati Ji Maharaj	English, Urdu, Hindi, Punjabi, Mathematics General Science, Social Studies, Environmental Science.
22.	Atman College of Education Opp. Greater Kailash, Marble Market, Jammu Ph. 0191-2481971, 2483760 Fax-2481897 email-atmancollegeofeducation@rediffmail.com	3 kms	Sh. Sanjay Mahajan	General Science, Social Studies, English Mathematics, Hindi and Punjabi
23.	Islamia Faridiya College of Education Kishtwar. Ph. 01995-260141, 260140 Fax - 260141	232 kms	Sh. T.A. Kichloo	English, Hindi, Social Studies, General Science, Mathematics, Punjabi, Urdu
24.	Harvard College of Education Karan Bagh, Airport Road, Jammu Ph. - 0191-263789, 263790	5 kms	S. Sudershan Singh Wazir	General Science, Social Studies, English Mathematics, Hindi and Punjabi
25.	CMH College of Education Chowdhi Top, Sainik Colony, Jammu Ph. 0191-2565283	10 kms	Sh. Z.A. Choudhary	English, Hindi, Punjabi, Social Studies, General Science and Mathematics
26.	KC College of Education Akhnoor Road, Jammu Ph. 0191-2502006 Fax. 2504711 email-kceducation@rediffmail.com	7 kms	Sh. Sudershan Mahajan	English, Hindi, Punjabi, General Science, Mathematics and Social Studies.
27.	Guru Nanak College of Education Jallo Chack, Bari Brahmana, Samba Ph. 01923-2480004, 285020	10 kms	Prof. Harbans Singh	General Science, Social Studies, English, Mathematics, Hindi and Punjabi
28.	R.K. College of Education Bari Brahmana, Jammu Ph. 01923-222825 Fax - 220217	14 kms	Sh. Ved Parkash	Social Studies, Mathematics, General Science, English, Hindi and Punjabi
29.	Ashoka College of Education Monke-Talab, Near Fish Seed Farm, Kathua Ph. 01922-238816, Fax - 1922-233385 email-ashokaetr@rediffmail.com	80 kms	Sh. Kamal Gupta	English, Hindi, Punjabi, Social Science General Science and Mathematics
30.	Guru Gang Dev Ji College of Education Chhan Arorian, Hiranagar, Kathua Ph. 01922-255167, 255567 Fax-255486 email-ggdj@rediffmail.com	65 kms	Shri Swami Vishwatamanand Saraswati Ji Maharaj	English, Hindi, Punjabi, Mathematics, General Science and Social Studies
31.	B.N. College of Education Nawabad Sunjuwan, Jammu Ph. 0191-2460980 Fax-2460980	4½ kms	Er. A.G.Kohli	General Science, Social Studies, English, Mathematics, Hindi and Punjabi
32.	New Age College of Education Phinter (Billawar) Distt. Kathua Ph. 01922-266389, 266390	80 kms	Sh. Sohan Lal	Hindi, Urdu, English, Punjabi, Social Studies and Science
33.	Sai Shyam College of Education Ghou Manhasan, Jammu Ph. 0191-2644319, 2505205	11 kms	Sh. C.L. Tickoo	General Science, Social Studies, English, Mathematics, Hindi, Urdu and Punjabi
34.	Vaishno Devi College of Education Reasi. Ph. 01991-244273 email-sudeshpuri@hotmail.com	69 kms	Sh. S.K. Puri	English, Urdu, Hindi, Punjabi, Science, Social Studies and Mathematics
35.	Ramisht College of Education Basohli, Distt. Kathua Ph. 01921-251929, Fax -01921-251713 email-www.RamishtCollege.com	140 km	Sh. Rajinder Parsad	General Science, Social Studies, English, Hindi, Mathematics and Punjabi
36.	J.K. College of Education Kunjwani, Jammu Ph. 0191-2480070, 2481865 fax - 2480723 email-jkps@yahoo.com	10 kms	Sh. Raj Daluja	Math, Science, Social Studies, Hindi, English and Punjabi
37.	Sant Mela Singh College of Education Near Digiana Ashram, Jammu Ph. 0191-2430346 Fax - 2430346	4 kms	Prof. Anmol Singh	Mathematics, Science, English, Hindi Punjabi and Social Studies
38.	Himalayan College of Education Rajouri Ph. - 01962-262320, Fax - 263510	150 kms	Mohd. Muslim Wani	General Science, Social Studies, English, Mathematics, Urdu, Hindi and Punjabi
39.	Poonch College of Education Poonch Ph./Fax - 01965-222729	246 kms	Mohd. Sayed Beig	Hindi, Urdu, English, Punjabi, Mathematics, Science and Social Studies.



40.	K.C. Gurukul College of Education Opposite BSF Gate, Paloura, Jammu Ph. 0191-0506033. Fax - 2548754 email-kcgurukulcollege@yahoo.co.in	6 kms	Sh. Arvind Mahajan	English, Hindi, Punjabi, Science, Social Studies and Mathematics
41.	Baba Farid College of Education Hatli road, Kathua Ph. 01922-286689, 235864	88 kms	Mrs. Harmeet Kour	General Science, Social Studies, English, Mathematics, Hindi and Punjabi
42.	Shastri Memorial College of Education, Reasi	69 Kms.	Sh. Tilak Raj Kohli	General Science, Social Studies, English, Mathematics, Hindi and Punjabi
43.	Kalra College of Education Poonch House, Kud (Patnitop) Distt. Udhampur Ph. 01992-288222	90 kms	Sh. S.P. Kalra	English, Hindi, Punjabi, Science, Mathematics and Social Studies
44.	Vimal Muni College of Education Ramgarh (Samba) Ph./Fax - 01923-234120	28 kms	Mrs. Arun Gupta	Mathematics, English, Hindi, Punjabi, General Science and Social Studies
45.	Thakur Dharam Singh College of Education Near Old Bus Stand, Ward No. 9 Kathua Ph - 01922-233263, 237263	85 kms	Thakur Gandharab Singh	General Science, Social Studies, English, Mathematics, Hindi and Punjabi
46.	Rajiv Gandhi Memorial College of Education National Highway, Kalibari, Kathua Ph. 01922-235503, 234503	80 kms	Mrs. Anu Sharma	English, Hindi, Urdu, Punjabi, Social Studies and Science.
47.	Shirdee College of Education Kunjwani-Bishnah Road, Jammu Ph. 01923-285397 Fax - 0191-2472369 email-shirdeecollege369@rediffmail.com	10 kms	Er. R.K. Puri	English, Hindi, Punjabi, General Science, Social Studies and Mathematics.
48.	Bhartiya College of Education Udhampur. Ph./Fax - 01992-276068 email-bhartiyacollege@rediffmail.com	65 kms	Ms. Madhu Bala	General Science, Social Studies, English Mathematics, Hindi and Punjabi
49.	Surya College of Education Jammu Pathankot NHW Logate More, Kathua Ph./Fax - 01922-234284	75 kms	Sh. Surjeet Singh Jamwal	General Science, English, Mathematics Hindi, Punjabi and Social Studies
50.	Ranjit College of Education Rakh-Bandhuwala, Kunjwani, Jammu Ph. Ph. 0191-2482402 email-ranjittrust@rediffmail.com	7 kms	S. Nirmaljit Singh	General Science, Social Studies, English, Mathematics, Hindi and Punjabi
51.	Tagore College of Education Akalpur (Lower Muthi) Jammu Ph./Fax 0191-2642213	9 kms	Sh. Om Parkash Gupta	English, Hindi, Punjabi, Science, Mathematics and Social Studies
52.	Kawa College of Education Patoli Gurha Brahmana, Akhnoor Road, Jammu Ph. 0191-2307838 Fax 2476817 email-kawa_college@rediffmail.com.	8.5 kms	Sh. M.S. Katoch	Hindi, English, General Science, Mathematics, Social Studies and Punjabi
53.	Saraswati College of Education 17 Miles, Najwal, P.O. Jakh, Jammu Ph. 01923-285194 Fax - 0191-2474938 email-saraswaticollege@rediff.com	21 kms	Sh. Rajesh Sharma	Hindi, English, Mathematics, Science, Social Studies and Punjabi
54.	Hill People College of Education Near Kanger Mohr, Kot Bhalwal, Jammu Ph. 0191-2623655	15 kms	Sh. Khalid Jhangir Malik	English, Hindi, Urdu, Punjab, Social Studies, General Science and Mathematics
55.	Sacred Heart College of Education Azad Colony, Paloura Lower Roop Nagar, Jammu Ph. 0191-2596045, 25960456 Fax-2596045 email-sacredheart_college@rediffmail.com	8 kms	Smt. Rajni Bala	English, Hindi, Punjabi, Mathematics, General Science and Social Studies
56.	Beacon College of Education Kot-Bhalwal, Jammu Ph. - 0191-2623100, 2623677 email-beaconcollege@rediffmail.com	12 kms	Smt. Nirmal Sharma	General Science, Social Studies, English, Mathematics and Hindi and Punjabi
*57.	Bhai Veer Singh College of Education Dera Ganotra, Tarore, Jammu Ph. 0191-2474510 email-bvsm_jmu@yahoo.co.in	18 kms	Sh. I.P.S. Bali	English, Hindi, Punjabi, Social Studies, Mathematics and Science
58.	Bhagat Kabir College of Education Hatli Road, Kathua Ph. - 01922-286689	88 kms	Capt. Sevinder Singh	General Science, Social Studies, English, Mathematics, Hindi and Punjabi
59.	Durga College of Education for Women Katra, Reasi Ph. 01991-233733, 233722 email-durgacollege@rediffmail.com	42 kms	Sh. Brij Mohan Sharma	English, Hindi, Social Studies, Science, Mathematics and Punjabi
60.	Jan College of Education Kangar Morh, Kot-Bhalwal, Jammu Ph. 0191-2623659, Fax-2623716 email-ajazjan7@yahoo.com.	12 kms	Sh. Ajaz Jan	English, Hindi, Punjabi, Mathematics, Science and Social Studies.

\* **The case of Bhai Veer Singh College of Education (S.No.57) is pending because of non availability of NOC from State Government.**

61.	Handa College of Education Sector-D, Sainik Colony, Jammu Ph. 0191-2307571, Fax 2463784 email-hceo2004@yahoo.com.	6 kms	Mrs. Veena Handa	English, Hindi, Punjabi, Social Studies, General Science and Mathematics
62.	Taawish College of Education Chhani Rama, Near Narwal, Transport Nagar, Jammu Ph. 0191-2307977 Fax - 2474241 email-info@tsedu.org.	3 kms	Mrs. Pooja Malhotra	Hindi, English, Punjabi, Mathematics, Science and Social Studies
63.	Galaxy College of Education Sector-E, Extn. Sainik Colony, Jammu 0191-2465559	5 kms	Sh. Arun Kumar Sharma	Punjabi, English, Social Studies, Mathematics, Science and Hindi
64.	Cosmic College of Education Lakhanpur, Distt. Kathua Ph. 9419151019	90 kms	Swami Pramanand Saraswati	General Science, Social Studies, English, Mathematics, Hindi and Punjabi
65.	K.C. Minerva College of Education Ramgarh (Vijaypur), Distt Samba 01923-234072.	18 kms	Sh. Koshal Dogra	General Science, Social Studies, English Mathematics, Hindi and Punjabi
66.	Lal Bhadur Shastri College of Education, Raj Bagh Kathua.	70Km	Dr. Surinder Kohli	General Science, Social Studies, English Mathematics, Hindi and Punjabi
67.	Bharat College of Education, National Highway Hatli Morh, Kathua.	85 Km	S. Harjinder Singh Anand	General Science, Social Studies, English Mathematics, Hindi and Punjabi
68.	R.S. College of Education, Village Kanayari, Jaglote, Kathua.	87 Km	Sh. K.K. Bakshi	General Science, Social Studies, English Mathematics, Hindi and Punjabi
69.	Satyam College of Education, Opposite R.T.O Office Lakhanpur, Kathua	85 Km	Sh. Kuldeep Wahi	General Science, Social Studies, English Mathematics, Hindi and Punjabi
70.	R.M. College of Education, Sainik Colony, Jammu.	6 Km	Sh. Rameshwar Mengi	General Science, Social Studies, English Mathematics, Hindi and Punjabi
71.	Thakur Anant Singh College of Education, Sainik Colony, Jammu.	6 Km	Sh. Sham Singh	General Science, Social Studies, English Mathematics, Hindi and Punjabi
72.	New Modern College of Education Sainik Colony, Jammu.	6 Km	Sh. Tarun Bahal	General Science, Social Studies, English Mathematics, Hindi and Punjabi
73.	Guru Teg Bahadur College of Education Jagatpur, Lakhanpur, Kathua	88 Km	S. Nihal Singh	General Science, Social Studies, English Mathematics, Hindi and Punjabi
74.	Shri Shri Parmahansa Yogananda College of Education, Kathua	86 Km	Sh.V.P.Sharma	General Science, Social Studies, English Mathematics, Hindi and Punjabi
75.	Sh. Bhim Singh College of Education, Udampur e.mail:- bhim.singh620@gmail.com Phone No.:- 7298271810, Mob:- 9419703745, 9797502513	65 Km	Sh. Parveen Singh	General Science, Social Studies, English Mathematics, Hindi and Punjabi

- \*NOTE -**
1. Colleges at S.No. 1, 2 & 10 are permanently affiliated while others are temporarily affiliated.
  2. All colleges are co-educational except S.No.10 & 59 which are meant for women.

**DISTRICT JAMMU**

	<b><u>NAME OF THE COLLEGE OF EDUCATION</u></b>	<b><u>DISTANCE FROM UNIVERSITY</u></b>
1	MIER College of Education, B.C. Road, Jammu	2 KM
2	M.C. Khalsa College of Education, Chand Nagar, Below Gumat, Jammu	1 ½ KM
3	NSM College of Education, Anand Nagar, Bohri, Jammu	6 KM
4	Divya College of Education, Lower Gaddi Garh, Miran Sahib, Jammu	7 KM
5	Luthra College of Education, Bohri, Talab Tillo, Jammu	5 KM
6	K.C.S. College of Education for Women, Upper Paloura, Jammu	8 KM
7	Trikuta College of Education, Nardni Raipur (Kot-Bhalwal Road) Jammu	15 KM
8	New Millennium National College of Education, Tarore	15 KM
9	Sher-e-Kashmir College of Education, Ajit Nagar, Near Airport, Jammu	5 KM
10	National College of Education, Purkhoo Camp, Domana,	13 KM
11	Calliope College of Education, Jammu-Akhnoor Highway, Dommi, Jammu.	20 KM
12	New Gandhi Memorial College of Education, Miran Sahib, Jammu	12 KM
13	Atman College of Education, Marble Market Opp. Greater Kailash, Kunwani Bye-Pass	3 KM
14	Harvard College of Edu. Gadi Garh, Airport Road Jammu.	5 KM
15	KC College of Education, Akhnoor Road, Jammu	7 KM
16	B.N. College of Education, Nawabad-Sunjwan, Jammu	4 ½ KM
17	Sai Shyam College of Education, Ghou-Manhasan Jammu,	11 KM
18	J.K. College of Education, Kunjwani, Jammu	10 KM
19	Sant Mela Singh College of Edu. Digiana, Jammu	4 KM
20	K.C. Gurukul College of Education,	6 KM
21	Shirdee College of Education	10 KM
22	Ranjit College of Education	7 KM
23	Tagore College of Education	9 KM
24	Kawa College of Education	8.5 KM
25	Hill People College of Education	15 KM
26	Sacred Heart College of Education	8 KM
27	Beacon College of Education, Kot-Bhalwal.	12 KM
28	Jan College of Education, Kot-Bhalwal, Jammu	12 KM
29	Handa College of Edu.Sainik Colony, Jammu	6 KM
30	Taawish College of Education, Narwal, Jammu	3 KM
31	Galaxy College of Education, Sainik Colony, Jammu	5 KM
32	Thakur Anant Singh College of Education, Sainik colony, Jammu	6 KM
33	New Modern College of Education, Sainik colony, Jammu	6 KM
34	R.M. College of Education, Jammu, Sainik Colony, Jammu	6 KM

**DISTRICT KATHUA**

	<b><u>NAME OF THE COLLEGE OF EDUCATION</u></b>	<b><u>DISTANCE FROM UNIVERSITY</u></b>
1	Vivekananda College of Education, Lakhanpur, Kathua.	85 KM
2	Ashoka College of Education, National , Kathua	80 KM
3	Guru Gang Dev Ji College of Educ. Chann Arrorian, Hiranagar, Kathua	65 KM
4	New Age College of Education, Phinter (Billawar) Distt. Kathua	80 KM
5	Ramisht College of Education, Basohli, (Kathua)	140 KM
6	Baba Farid College of Education, Hatli Morh, Kathua	88 KM
7	Thakur Dharma Singh College of Education, Kathua	85 KM
8	Rajiv Gandhi Memorial College of Education, Kathua	80 KM
9	Surya College of Education, Kathua	75 KM
10	Bhagat Kabir College of Edu. Hatli Road.	88 KM
11	Cosmic College of Education, Lakhanpur, Kathua	90 KM
12	Lal Bhadur Shastri College of Education	70 KM
13	Bharat College of Education, Kathua	85 KM
14	R.S. College of Education, Kathua	87 KM
15	Satyam College of Education, Kathua	85 KM
16	Guru Teg Bhadur College of Education, Kathua	88 KM
17	Shri Shri Paramhansa Yogananda College of Education	86 KM

**DISTRICT UDHAMPUR**

	<b><u>NAME OF THE COLLEGE OF EDUCATION</u></b>	<b><u>DISTANCE FROM UNIVERSITY</u></b>
1	Shivalik College of Education, Shiv Nagar, NH-1A, Udhampur	62 KM
2	Kalras College of Education, Hospital Road, Udhampur	65 KM
3	Kalra College of Education, Poonch House, Kud	90 KM
4	Bhartiya College of Education, Udhampur	65 KM
5	Bhim Singh College of Education, Udhampur	65 KM

**DISTRICT SAMBA**

	<b><u>NAME OF THE COLLEGE OF EDUCATION</u></b>	<b><u>DISTANCE FROM UNIVERSITY</u></b>
1	Dogra College of Educ., Basi Kalan, Bari Brahmana Jammu	10 KM
2	Chenab College of Education, Langer, Opp. S.B.I. Kaluchak, Jammu	8 KM
3	Adarsh College of Education, Tarore Bridge, N H, The. Samba, Jammu	22 KM
4	Bhargava College of Education, Samba	40 KM
5	CMH College of Education, Chowdhi Top, Sainik Colony, Jammu	10 KM
6	Guru Nanak College of Education, Jallo Chack Kunjwani.	10 KM
7	R.K. College of Education, Bari Brahmana Jammu.	14 KM
8	Vimal Muni College of Edu., Ramgarh, Jammu	28 KM
9	Saraswati College of Education, Najwal, Jammu-Pathankot NH, Jammu	21 KM
10	KC Minerva College of Education	18 KM

**DISTRICT RAJOURI**

	<b><u>NAME OF THE COLLEGE OF EDUCATION</u></b>	<b><u>DISTANCE FROM UNIVERSITY</u></b>
1	Tariq College of Education, Ward No.1, Near Salani Bridge, Rajouri	150 KM
2	Swami Vishwatamanand Saraswati College of Education, Sunderbani, Rajouri	70 KM
3	Himalayan College of Education, Rajouri.	150 KM

**DISTRICT KISHTWAR**

	<b><u>NAME OF THE COLLEGE OF EDUCATION</u></b>	<b><u>DISTANCE FROM UNIVERSITY</u></b>
1	Islamia Faridia College of education, Kishtwar	232 KM

**DISTRICT REASI**

	<b><u>NAME OF THE COLLEGE OF EDUCATION</u></b>	<b><u>DISTANCE FROM UNIVERSITY</u></b>
1	Vaishno Devi College of Education, Reasi	69 KM
2	Shastri Memorial College of Education, Reasi	69 KM
3	Durga College of Education, Katra	42 KM

**DISTRICT POONCH**

	<b><u>NAME OF THE COLLEGE OF EDUCATION</u></b>	<b><u>DISTANCE FROM UNIVERSITY</u></b>
1	Poonch College of Education, Poonch	246 KM

**III. To report the action taken by the Vice Chancellor in having authorized revised statutes governing Bachelor Degree Course in Education (B.Ed. Course) in Non Govt. Colleges affiliated with the University of Jammu.**

**1. DURATION OF BACHELOR'S DEGREE COURSE IN EDUCATION (B.Ed. COURSE)**

- 1.1 B.Ed. Course is a whole time course of the duration of one academic year.
- 1.2 A person, as long as he is on the rolls of B.Ed course, **shall not be eligible to attend any other course of instruction or appear in any other examination of the University**, provided that a candidate who has been placed under reappear category in one course/paper of an examination, other than the qualifying examination, or was scheduled to appear in the examination (other than the qualifying examination) either as a regular or private candidate before the commencement of class work of B.Ed. course but could not do so on account of delay in the conduct of said examination, for reasons beyond his control, shall be eligible to appear in that examination, even though he/she has been duly admitted to the B.Ed. course.
- 1.3 **Any person in employment or self-employment or engaged in a business or profession is not eligible for admission to the B.Ed. course in the Non-Government colleges.** Such a person may, however, be considered for admission, provided :
- i) he/she **produces a certificate** from his/her employer that the employer has no objection to his/her employee pursuing whole time B.Ed course and that the employee is on **authorised leave** duly sanctioned by the competent authority for the purpose;
  - ii) in the case of self-employed person or a person engaged in business or a profession, the person concerned **gives an undertaking** on a stamped paper of proper value duly attested by the Notary that he/she will devote his/her whole time for studies as a student during the period he/she remains on roll of the College for the course and shall not engage in any business or profession or avocation during this period or engage in any other activity which is likely to interfere with his/her studies in the College.

**2. MEDIUM OF INSTRUCTION AND EXAMINATION**

**English shall be the medium of instruction. Medium of examination shall be English, Hindi & Urdu only ( as per decision of University Council).**

**3. DEFINITIONS**

- 3.1 "Course" means the B.Ed. Course.
- 3.2 **"Qualifying Examination" for the purpose of admission to the B.Ed course means Bachelor's Degree Examination** (on the basis of which the candidate becomes eligible for admission to the B.Ed. course in terms of clause 6.1) in the faculties of Arts, Science, Social Sciences, Commerce, Engineering, Medicine, Agriculture, Veterinary Science, Forestry and Music and Fine Arts of the University of Jammu or any other statutory University in India registered with the Association of Indian Universities. **(The candidates holding Bachelor's Degree of one sitting pattern are not eligible for admission to the B.Ed course)**
- 3.3 **"Merit" means percentage of marks obtained by the candidate in the qualifying examination.**
- 3.4 "Open Merit Category" means consideration under Non-Reserved Category on the basis of inter-se merit.
- 3.5 "Incomplete Form" means the Application Form which is wrongly filled in, **gives incomplete/wrong/false information, not attested by the prescribed authority**, not accompanied by the **requisite late fee** in full (if applicable) or **deficient** in respect of one or more requisite certificate(s)/documents(s).
- 3.6 **"Late Receipt" means the Application Form not received in the University during working hours on or before the last date notified for the purpose.**
- 3.7 "Authority to attest the Application Form and Photograph" is either **the Principal** of the Institution from where the candidate passed the qualifying examination or where he is studying at present or **a gazetted officer**.
- 3.8 "Candidate" means the person seeking admission to the B.Ed. course.

**4. CENTRALISED ADMISSION**

- 4.1 No Non-Government College of Education other than the Minority Institution (M.C. Khalsa College of Education) shall make admission of the candidates to the B.Ed. course on its own. Selection of candidates for all seats in B.Ed course in each Non-Government affiliated college of education shall be made by the University.

**5. ELIGIBILITY**

- 5.1 **Admission to the B.Ed. course in the Non-Government Colleges of Education shall be open to those candidates who have passed Bachelor's Degree Examination in the faculties of Arts, Science, Social Sciences, Commerce and Management (under 10+2+3 or 10+2+2/10+1+3 pattern), Engineering, Medicine,**

**Agriculture, Veterinary Science, Forestry and Music and Fine Arts from the University of Jammu or any other 45% statutory University in India registered with the Association of Indian Universities and have secured at least 45% of the aggregate marks in the qualifying examination in case of general category.**

**For disadvantaged sections like SC/ST/ Other Backward Classes(O.B.C.)/ Area Adjoining Actual Line of Control(A.L.C.) /Resident of Backward Area (R.B.A.)/Disabled candidates, the eligibility will be 40% in the qualifying examination. ( The principle of rounding of 1/2 marks and above into one whole mark shall also be applicable, meaning thereby that a candidate having secured 44.50%, in case of General Category AND 39.50% in case of Reserved category.**

**However, one sitting B.A. Degree (External Examination) conducted by any University in the country is not recognised by this University for the purpose of admission to the B.Ed course.**

## **6. SUBMISSION OF APPLICATION FORM**

- 6.1 Before submitting the Application Form to the University, candidate shall **read the norms carefully** to ensure that he/she fulfils all the eligibility conditions laid down for admission to B.Ed. course. In case, it is detected at any subsequent stage that a candidate does not fulfil the eligibility criteria and/or has furnished incorrect information, concealed/suppressed material facts, his/her candidature will be cancelled, even if already admitted. The University will, in no way, be responsible for the consequences emanating therefrom.
- 6.2 A candidate shall not be allowed to make any change in the Application Form, by way of addition, deletion or alteration, once it has been submitted to the University.
- 6.3 **INCOMPLETE APPLICATION FORMS AND THOSE RECEIVED AFTER THE NOTIFIED DATE, SHALL NOT BE ENTERTAINED UNDER ANY CIRCUMSTANCES AND THE UNIVERSITY SHALL NOT ENTER INTO ANY CORRESPONDENCE IN THIS REGARD.**

## **7. CERTIFICATES AND OTHER DOCUMENTS TO BE ATTACHED\***

- 7.1 The Application Form, duly filled in, should be accompanied by photo copies (signed by the candidate and attested by the authority mentioned at clause 3.7) of the following certificates/documents
- i) Matriculation or equivalent examination certificate.
  - ii) Marks Certificate of 12th Class examination.
  - iii) Bachelor's Degree/Provisional Certificate issued by the institution/University.
  - iv) Marks Certificate of each part of Bachelor's Degree examination.
  - v) Certificate of good conduct from the Principal of the college last attended or Head of the institution where the candidate is studying at present or Gazetted Officer.
  - vi) Category certificate issued by the competent authority as per latest SRO issued by the J&K State Government for local candidates and by the competent authority as notified in other states. (by those candidates who claim consideration under Reserved Categories).
  - vii) Certificate of being Permanent Resident of Jammu province of the Jammu and Kashmir State issued by the Competent Authority by those candidates who :
    - a) passed the qualifying examination from University other than the University of Jammu but belong to the areas falling within the territorial jurisdiction of the University of Jammu and claim consideration for admission to the course under clause 8.1 (a) (ii)
    - b) claim consideration for admission under any of the reserved categories.
  - viii) Affidavits as per specimens given at **Annexure-I and II** duly attested by First Class Magistrate or a Notary Public (by such candidates as claim consideration under Reserved Category in terms of clause 7.2).
  - ix) A certificate and an undertaking, as the case may be, by such candidates as are in employment or may be self-employed or are engaged in business or profession in terms of clause 7.3.
  - x) Certificate (on the prescribed form attached with the Brochure Annexure III) for candidates seeking admission under 9.1a(iii).
  - xi) An affidavit as per specimen given at Annexure IV duly attested by First Class Magistrate or a Notary Public {by such candidates as claim admission under clause 9.1.a(iii) }.

**IMPORTANT NOTE :** Candidates seeking admission to the course under 8 .1. a (iii) any reserved category must attach with the Application Form an attested copy of the certificate on the form prescribed and issued for the purpose by the competent authority under law in force. **Failure to attach the attested copy of such certificate with the Application Form will render the candidate ineligible for admission under reserved category.** Certificate on plain paper will not be entertained. The certificates of candidates belonging to categories of SC/ST/ Other Backward Classes(O.B.C.)/ Area Adjoining Actual Line of Control(A.L.C.)/Resident of Backward Area (R.B.A.)/Disabled and Defence Service Personnel shall not be entertained



if these do not conform to the latest SRO/Order issued by the J&K Government for the purpose. In case, a candidate claims admission under reserved category but does not attach the requisite certificate in support of his/her claim with the Application Form and if found otherwise eligible, will be considered under Open Merit Category. **NO CERTIFICATE OR ATTESTED COPY THEREOF WILL BE ENTERTAINED AFTER THE LAST DATE NOTIFIED FOR THE SUBMISSION OF APPLICATION FORMS. THE CLAIM OF THE CANDIDATE FOR CONSIDERATION UNDER ANY RESERVED CATEGORY WITH "UNDER PROCESS CERTIFICATE" OF CATEGORY WILL NOT BE ENTERTAINED.**

7.2 A candidate seeking admission under reserved category must submit along with the Application Form an AFFIDAVIT as per specimen given at Annexure-I duly attested by a First Class Magistrate or a Notary Public to the effect that category certificate and other certificates/documents (attested copies of which are attached with the Application Form) are genuine and in the event of their getting proved otherwise, his admission shall be cancelled besides any other action that may be taken against him under law for his/her civil or criminal liability.

7.3 In case the candidate is in employment or is self-employed or is engaged in business or profession, he/she shall also furnish the requisite certificate or undertaking, as the case may be, with the Application Form in accordance with clause 1.3.

## 8. DISTRIBUTION OF SEATS

8.1 (a) 75% of the sanctioned seats available in Non-Government Colleges of Education shall be filled from amongst eligible candidates who :-

- (i) are Graduates of the University of Jammu;
- OR (ii) belong to areas falling within the territorial jurisdiction of the University of Jammu but have passed the qualifying examination from a University other than the University of Jammu;
- OR (iii) are employees of the Central/State Govt./or Public Undertaking or any other Organisation recognised by the Syndicate are posted within the territorial jurisdiction of the University or sons, daughters, spouses of such employees. A certificate to this effect on **DO pad letter of the Head/ Commanding Officer** must be attached with the application form.

**NOTE :** Candidates applying under 8.1 (a) (iii) category must attach certificate and affidavit as per the specimen given at Annexure III & IV. Non-compliance shall lead to rejection of the candidature under the category and candidate shall be considered under 8.1(b) if otherwise eligible.

OR (iv) Wards of Kashmiri migrants in other parts of the country are also eligible for B.Ed admission to Non-Govt. colleges affiliated to Jammu University for the academic session 2011-12 under Local category of the admission within the 75% of the sanctioned seats in order of merit provided such a candidate produces a documentary evidence of belonging to a family registered as Kashmiri Migrant.

(b) Remaining 25% seats shall be filled from amongst eligible candidates who neither belong to the territorial jurisdiction of the University of Jammu nor have passed the qualifying examination from the University of Jammu.

(c) In case, the number of eligible candidates is less than the number of seats available under (b) above, the unfilled seats may be filled from amongst the eligible candidates falling under (a) above and vice-versa.

9.1 8% seats shall be filled up by the Management of the respective colleges on their own out of the candidates who may or may not have applied to the university for seeking admission to the B.Ed Course for the session 2011-2012.

## 10. PROCEDURE AND MODE OF SELECTION

10.1 Admission of all eligible candidates to the B.Ed. Course shall be made by the Centralized Admission Committee constituted by the Vice-Chancellor.

10.2 Merit lists of eligible candidates mentioned in clause 8.1 (a) 8.1 (b) and those belonging to reserved categories shall be prepared separately on the basis of merit i.e. percentage of marks obtained in the qualifying examination. Admission of the candidates falling under clauses 8.1 (a) and 8.2 (b) shall be made on the basis of comparative merit in the respective lists.

10.3 (a) In case two or more candidates falling under open merit category or reserved category have equal merit, the inter-se order of priority for admission of such candidates shall be determined in the order formulated as under:-

- i) Candidate obtaining higher percentage of marks in Higher Secondary Part-II or an examination recognized as equivalent thereto;



- ii) Candidate obtaining higher percentage of marks in the Matriculation examination or any other examination recognized as equivalent thereto, if percentage of marks at serial (i) is equal.
- iii) Candidate older in age, if the percentage of marks at serial (ii) is also equal.

#### 11. ALLOTMENT OF COLLEGES

The admission will be made strictly on merit. The college shall be allotted to a candidate during the Counselling session by the Admission Committee on merit-cum-choice basis subject to availability of seat in that college.

#### 12. ALL ADMISSIONS-PROVISIONAL

All admissions to the B.Ed. Course in the Non-Govt. colleges shall be provisional and subject to confirmation by the University.

**NOTE:-** The provisional admission, if granted to a candidate who has taken his/her last examination from the university other than the University of Jammu is liable to be cancelled if he/she does not submit his/her inter-university migration certificate issued by the concerned university alongwith the other requisite documents to the university through the college where admitted for the B.Ed course with the relevant Registration Return (R/R) within 30 days from the date of counselling.

#### 13. VERIFICATION OF CERTIFICATES

All the candidates selected provisionally for admission to B.Ed. Course, shall submit all the original certificates/documents at the time of Counselling/Admission for verification of their eligibility conditions failing which they shall forfeit the right of admission and no complaint shall be entertained in this regard. **The selected candidates except those belonging to Reserved Categories, shall also submit an Affidavit as per the specimen given at Annexure-II**, duly attested by a First Class Magistrate or a Notary, alongwith the original certificates/documents.

The candidates seeking admission under 8.1.(a) (iii) must attach certificate on the prescribed form (Annexure III) and an Affidavit (Annexure IV) otherwise their claim for admission to 8.1(a)(iii) clause shall not be considered.

#### 14. APPEALS

14.1 In case the candidate, who had submitted his Application Form on due date, has any grievance and feels that the norms governing the admission have not been adhered to, he/she shall have the option to make an appeal to the Convenor, Admission Committee (B.Ed.) on the prescribed form on payment of Rs 100/- in the form of Demand Draft in favour of the Director Colleges Development payable at Jammu. The form duly filled in shall be submitted to the **Convenor (B.Ed. Admissions) within two days after the last date of admission during working hours**. Such appeals shall be considered by the Appellate Authority comprising the following:

- 1/ Vice-Chancellor (Chairman)
- 2/ Dean, Academic Affairs
- 3/ Registrar
- 4/ Director College Development (Convenor, B.Ed Admission Committee)
- 5/ Dean, Faculty of Behavioural Sciences
- 6/ Liason Officer Legal matters, Jammu University.
- 7/ One Principal of a Non-Government College of Education to be nominated by the Vice-Chancellor
- 8/ Officer dealing with the B.Ed Admissions.

**Majority of the members shall form the quorum.**

14.2 **It shall be obligatory on the part of the appellant to remain present on the scheduled date and time** at the venue of the meeting of the Appellate Authority. The candidate will ascertain the schedule time, date and venue of the meeting from the Convenor (B.Ed Admission). He/she shall appear before the Appellate Authority, if called upon to do so. The decision of the Appellate Authority shall be final and binding on the appellant.

#### 15. REDRESSAL OF GRIEVANCES

In case of any grievance in the matter of interpretation of statutes or in dealing with a situation not envisaged in the statutes, the matter shall be referred to the Vice-Chancellor who shall issue such order as he may deem fit under the circumstances.

#### 16. LEGAL DISPUTES

All legal disputes including consumer court relating to the admission of candidates to B.Ed. Course in Non-Govt.

Colleges shall be subject to the jurisdiction of Courts in Jammu.

**17. WITHDRAWAL OF ADMISSION**

The candidates can apply for withdrawal of admission upto one day prior to close of admission. The fee after deducting Rs.600/- will be refunded by cheque drawn in the name of candidate after completion of admission process.

#### (IV) IMPORTANT INFORMATION FOR THE CANDIDATES

- (i) The admission to the B.Ed. regular course shall be made by the Centralized Admission Committee (B.Ed.) for the (Separate session) (2): 2011-2012.
- (ii) **No college or any other agency has been authorised to deal with the candidates for admission to the B.Ed. regular course in the Non-Government affiliated Colleges of Education except Miniority Insitution (M.C. Khalsa college of Education) which has been allowed to admit Sikh students (minority community) upto 50% of sanctioned seats.**
- (iii) Lists in order of merit of all the candidates covered under norms 8.1 (a) (i) (ii) (iii) and and 8.1 (b), shall be displayed on the Notice Board (s) located around the Counselling Hall of the University of Jammu on the schedule day of their counselling.
- iv) If any document produced by a candidate is found to be fake at any stage, admission of such a candidate shall be cancelled.
- v) As all the selection lists will be provisional, therefore the selected candidates shall produce the original certificates/documents before the concerned officials in the Counselling Hall for verification of eligibility condition & merit. On getting clearance, the candidates shall deposit their Bank Drafts at the counter meant for the purpose and obtain the admission slip, specifying the college for which admitted.
- vi) In case candidates desirous of seeking admission come across any difficulty or are being harassed by any one on account of any reason, they are advised to bring this to the notice of the Convenor (B.Ed. Admissions).
- vii) The candidates admitted in each college are required to attend the classes regularly to earn eligibility (under statutes governing B.Ed. examination, candidates must have attended atleast 75% of the total lecturers delivered during the session) to appear in the University examination. They shall also follow the instructions issued by the college from time to time in respect of punctuality, regularity, participation in curricular and co-curricular activities, etc.
- viii) The class work will start w.e.f. 1st February, 2012.

#### (V) COURSES OF STUDY FOR B.ED EXAMINATION FOR THE YEAR 2011-2012 :-

##### COMPULSORY PAPERS

Paper - I	Education in Emerging Indian Society
Paper - II	Psychology of Teaching Learning Process
Paper - III	School Management and Pedagogics of Education
Paper - IV	Development of Educational System in India.

##### OPTIONALS

Paper - V	Any one of the following specializations :
a)	Essentials of Educational Technology
b)	Information and Communication Technology
c)	Guidance and Counselling
d)	Educational Measurement and Evaluation
e)	Comparative Education
f)	Educational Administration
g)	Health and Physical Education
h)	Environmental Education
i)	Home Science
j)	Indian Music

k) Work Experience

**TEACHING SUBJECTS**

Paper VI and VII : Content-cum-Methodology of teaching in any two school subjects only from any of the following groups :

- Group I Teaching of English/Hindi/Urdu/Punjabi
- Group II Teaching of Social Studies (History/Civics/Economics/Geography)
- Group III Teaching of General Science (Physics, Chemistry & Biology)
- Group IV Teaching of Mathematics

The students shall have to opt any two subjects selecting not more than one from each of the groups mentioned above.

**The syllabus for the session 2011-2012 is under revision.**

**VI. SCHEDULE OF EXAMINATION**

The annual examination for the Degree of Bachelor of Education (Separate Session) shall be held in October or any other date prescribed by the University at Jammu and such other places as may be fixed by the Vice-Chancellor.

-----X-----

**1. FEES\* PAYABLE AT UNIVERSITY BY THE CANDIDATE AT THE TIME OF COUNSELLING**

A candidate admitted to the B.Ed course shall pay **Rs.25,130/- (Twenty five thousand, one hundred & thirty only )** through Bank Draft issued by a Nationalised or Scheduled Bank payable at R.C.C. Jammu in favour of **Director Colleges Development, University of Jammu** at the time of counselling, for the entire duration of the course which includes **Rs.2000/- as Infrastructure fund of the University Rs.600/- as Examination Development Fund Rs.190/- as Digitalization Fund and Rs.110/- as Internal Quality Assurance Cell Fund, Corpus Fund Rs.640/-, Cultural Fee-Rs.80/-, Red Cross Rs.10/-.**

**2. FEES\* PAYABLE AT COLLEGE WHERE TO BE ADMITTED AS UNDER:**

- i) Examination fees Rs 540/- (Full subjects) & Rs. 25/- maintenance charge+ Rs. 35/- Desk fee
- ii) Sports Fee Rs. 45/-
- iii) NSS Fees Rs. 60/-
- iv) Registration Fee Rs.180/-
- v) Eligibility Fees Rs.350/- (Only for those who took their last examination from the University other than the University of Jammu)
- vi) Development Fund Rs.1500/-
- vii) Annual maintenance charges Rs.1000/-
- viii) Library Security Rs.500/- (Refundable)
- ix) Information Brochure of the college Rs.500/-
- x) College Magazine Rs.60/-

**The charges prescribed for the hostel facilities for all the colleges for the session 2011-2012 shall be:**

- i) Hostel Rent
  - **For Hostel within campus :**  
Not exceeding Rs.7000/- for the entire duration inclusive of 24 hrs. electricity, water provision and other maintenance charges to be realized in three installments.
  - **For Hostel outside campus :**  
Not exceeding Rs.6000/- for the entire duration inclusive of 24 hrs. electricity, water provision and other maintenance charges to be realized in three installments.
- ii) Mess charges
  - Upto maximum of Rs.15000/- for the entire duration to be realized in three installments.
  - The menu of the food to be served to the boarder shall not be lower in quality than that of the University hostel.
- iii) Hostel Security
  - Rs. 500/- (Refundable)
- iv) Uniform
  - Uniform shall be mandatory as per the colour prescribed by the respective colleges. The students shall have option to purchase the uniform on their own. Cash receipt has to be issued in case uniform is purchased from the college.

## **FOR RESERVE CATEGORY ONLY**

**(On non judicial stamp paper worth Rs.5, duly attested by Magistrate/Notary)**

**ANNEXURE—I**

(Statute 8.2)

## **A F F I D A V I T**

I, \_\_\_\_\_

Son/daughter of \_\_\_\_\_

R/O \_\_\_\_\_ do hereby solemnly affirm and declare that —

- (i) I am seeking admission to the B.Ed. regular course in a Non-Government College of Education affiliated with the University of Jammu on the basis of Reserved Category.
- (ii) Photocopies of the Reserved Category Certificate, qualification certificates and other documents signed by me and attested by the attesting authority and attached with the Application Form are genuine.
- (iii) The category certificate is issued by the competent authority on the approved form and conforms to the latest SRO/order issued by the J&K Govt.
- (iv) I have not already availed of this concession for admission to any course in the teaching departments of the University.
- (v) In the event of my above averments having been proved otherwise, my admission shall stand automatically cancelled. Besides I shall be liable to any other action that may be taken against me under law.

I, further affirm and declare that the averments made above are correct and true to the best of my knowledge and belief and nothing has been concealed or suppressed.

**DEPONENT**

# **FOR ALL CANDIDATES**

**(On non judicial stamp paper worth Rs.5, duly attested by Magistrate/Notary)**

**ANNEXURE — II**

## **A F F I D A V I T**

I, \_\_\_\_\_

Son/daughter of \_\_\_\_\_

R/O \_\_\_\_\_ do hereby solemnly affirm and declare that —

- i) I have passed my degree examination in the year \_\_\_\_\_ from the University of \_\_\_\_\_.
- (ii) the certificates and documents submitted by me on the basis of which I claim admission are genuine.
- (iii) I shall not pursue any other course or appear in any other examination during my admission to the B.Ed course other than as specified in 1.2 of the norms.

In the event of my above statement having been proved otherwise my admission shall stand automatically cancelled. Besides I shall be liable to any other action that may be taken against me under law.

I, further affirm and declare that the averments made above are true to the best of my knowledge and belief and nothing has been concealed or suppressed.

**DEPONENT**

# **FOR CANDIDATES APPLYING UNDER 8.1 a (iii) ONLY**

**ANNEXURE—III**  
{Statute 8.1a(iii)}

## **CERTIFICATE**

**(Duly issued by the Commanding Officer/Officer Commanding/Employer/Head of the Divisional office of the concerned organisation in Jammu Division)**

Certified that Mr./Ms. \_\_\_\_\_ S/o,  
D/o, Sh. \_\_\_\_\_ **(Name of the Employee)** holding the post of \_\_\_\_\_  
\_\_\_\_\_ is a regular employee of this department/organisation of the Central/  
State Govt./Govt. Undertaking. Presently he/she is posted at \_\_\_\_\_  
since \_\_\_\_\_ vide order no. \_\_\_\_\_ dt. \_\_\_\_\_ which falls within the  
jurisdiction of Jammu Division of the J&K State. His/Her posting in the said office is not a temporary arrangement  
or short term attachment.

The relation of the employee with the candidate namely \_\_\_\_\_ is \_\_\_\_\_.

\_\_\_\_\_  
\_\_\_\_\_  
\_\_\_\_\_  
\_\_\_\_\_

(Complete Address of the issuing  
department for correspondance)

Signature  
(Name \_\_\_\_\_)  
(SEAL WITH CLEAR IMPRESSION)

# **FOR CANDIDATES APPLYING UNDER 8.1 a(iii) ONLY**

**(On non judicial stamp paper worth Rs.5, duly attested by Magistrate/Notary)**

**ANNEXURE — IV**

(Statute 8.1 a iii)

## **A F F I D A V I T**

I \_\_\_\_\_ S/o, D/o  
Sh. \_\_\_\_\_ do hereby solemnly declare that I am a permanent employee of the  
Department of \_\_\_\_\_ of the Central Govt./Govt. Undertaking and at present working  
as \_\_\_\_\_ at \_\_\_\_\_ since \_\_\_\_\_ in pursuance of order  
No \_\_\_\_\_ (name of the office and location where posted in Jammu Division) dated  
\_\_\_\_\_ of deptt./org. My posting in the Jammu division of the J&K State is not a temporary  
arrangement or short term attachment.

I, further solemnly declare that the particulars entered in the Certificates submitted by me/my son/ my  
daughter/my spouse under clause 9.1 a(iii) Annexure III, duly issued by my Commanding Officer/Employer/Head  
of the Divisional Office of the Department/organisation, in Jammu Division are correct and true to the best of my  
knowledge. In case, the above statement is found false at any stage, the admission granted to the B.Ed course  
in my favour/in favour of my Son/Daughter/Spouse namely \_\_\_\_\_ shall stand cancelled automatically and I  
shall be liable to be punished under law. My relation with the said candidate is \_\_\_\_\_.

**DEPONENT**